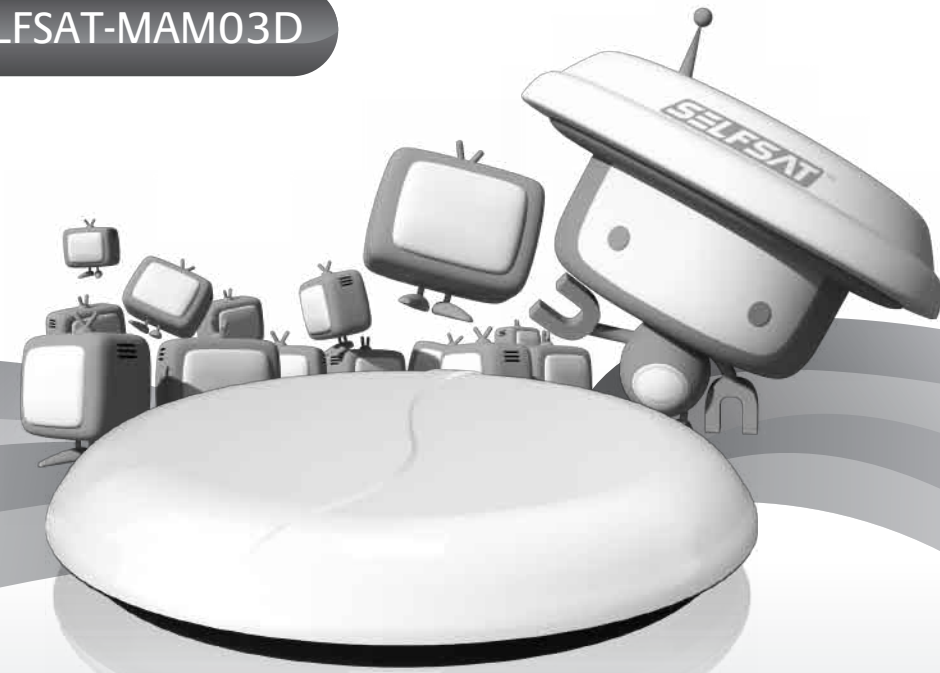
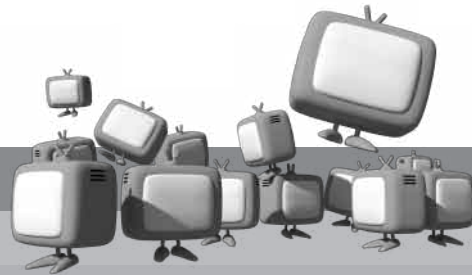


The Ultimate
INMOTION
satellite antenna

Installation Guidelines For

SELSAT-MAM03D



The Ultimate
INMOTION
satellite antenna

Exclusive Distributor



GW Distribution Sdn Bhd (521053-D)
33, Ground Floor, Jalan Yap Kwan Seng, 50450 Kuala Lumpur, Malaysia

T : +603-2166 3163, +603-2166 5163

F : +603-2166 2163

E : enquiry@gwd.com.my

Contents

1. Product Introduction

Introduction 2

Important Safety Instructions 3

2. Specifications And Components

Step 1. Dimension 4

Step 2. Specifications 4

3. Components

Components 5

4. Installation

Step 1. Installation Diagram 6

Step 2. Mounting And Installing The Satellite Antenna 7

5. Storage And Maintenance

Storage And Maintenance 8

6. Customer Notes

Customer Notes 9

7. Checklist For Troubleshooting

Checklist For Troubleshooting 9

1. Product Introduction

Introduction

The Selsat Portable Satellite Antenna is a state-of-the art, actively stabilized antenna system that delivers live satellite TV content to a vehicle, even while the vehicle is in motion.

This manual provides detailed instructions on the proper installation of the Selsat Portable Satellite Antenna system.



This Product must NOT be connected to any active monitor that is visible to the vehicle's driver while the vehicle is in motion. This product is intended for rear seat entertainment only.

Note on recording programming

Most television programs and films are copyrighted. This means that someone has legal rights governing the reproduction and distribution of this material. In certain circumstances, copyright law may apply to private taping of copy righted materials. In most cases, it is permissible to record for your personal use, as long as you do not sell the material. You must act responsibly in this area – find out more on the matter if you are unsure.

Some pay-per-view programs may be licensed from producers as “view-only” programs. These are copyrighted programs, and may not be copied or reproduced for any purpose without the express written permission of the copyright owner.

Important Safety Instructions – Please Read

Note on recording programming

For your safety and protection, please read this entire Installation Guide before you install the Portable Satellite Antenna.

Heed Cautions

Be sure to follow all cautions on the product and in the installation instructions.

Follow Instructions

Be sure to follow all installation instructions as detailed in this manual.

Do not open the receiver's cover. Opening or removing the cover may expose you to dangerous voltage.



WARNING!

It is dangerous to watch television or operate the remote control while you are driving a vehicle. The Selsat Portable Satellite Antenna is designed specifically to provide entertainment to vehicle passengers and should never be connected to active video screens visible to the vehicle driver while the vehicle is in motion. Failure by the driver of a vehicle equipped with a Selsat Portable Satellite to pay full attention to traffic and road conditions could result in an accident or collision with personal injury or death resulting.

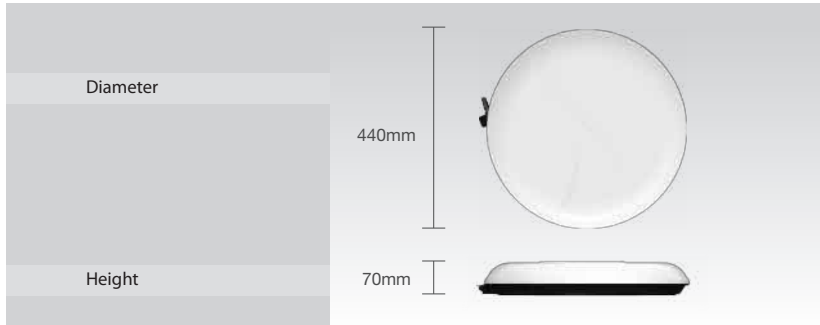


CAUTION!

To reduce the risk of fire or electrical shock, do NOT insert any objects into the receiver's ventilation openings.

2. Specifications and Components

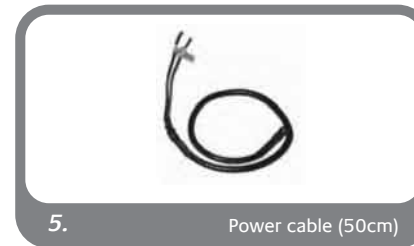
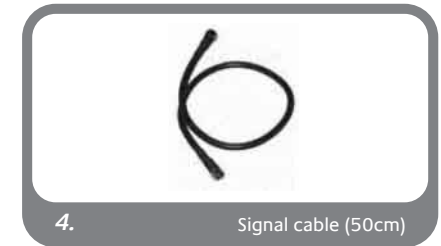
Step 1. Dimension



Step 2. Specifications

Input satellite frequency	10.7~11.7GHz
Polarization	Horizontal
Antenna Gain	28.1 dBi @ 11.7GHz
Size (WxDxH)	440mm X 70mm (West)
Weight	3.3Kg
Elevation Range	76.5° (West)
Azimuth Range	Unlimited
Tracking Rate	75° /sec
Current Consumption	500mA max.
Operating Temperature	-30°C to +60°C
Storage Temperature	-40°C to +80°C
LNB Output	1 output
LNB Output Frequency	950~1,950MHz
L.O Frequency	9.75 GHz
LNB Noise Figure	0.2dB typ.
Input VSWR	2.5:1 typ.
Output VSWR	2:1 typ.
Conversation Gain	60dB typ.
Gain Flatness	6dB p-p max

3. Components

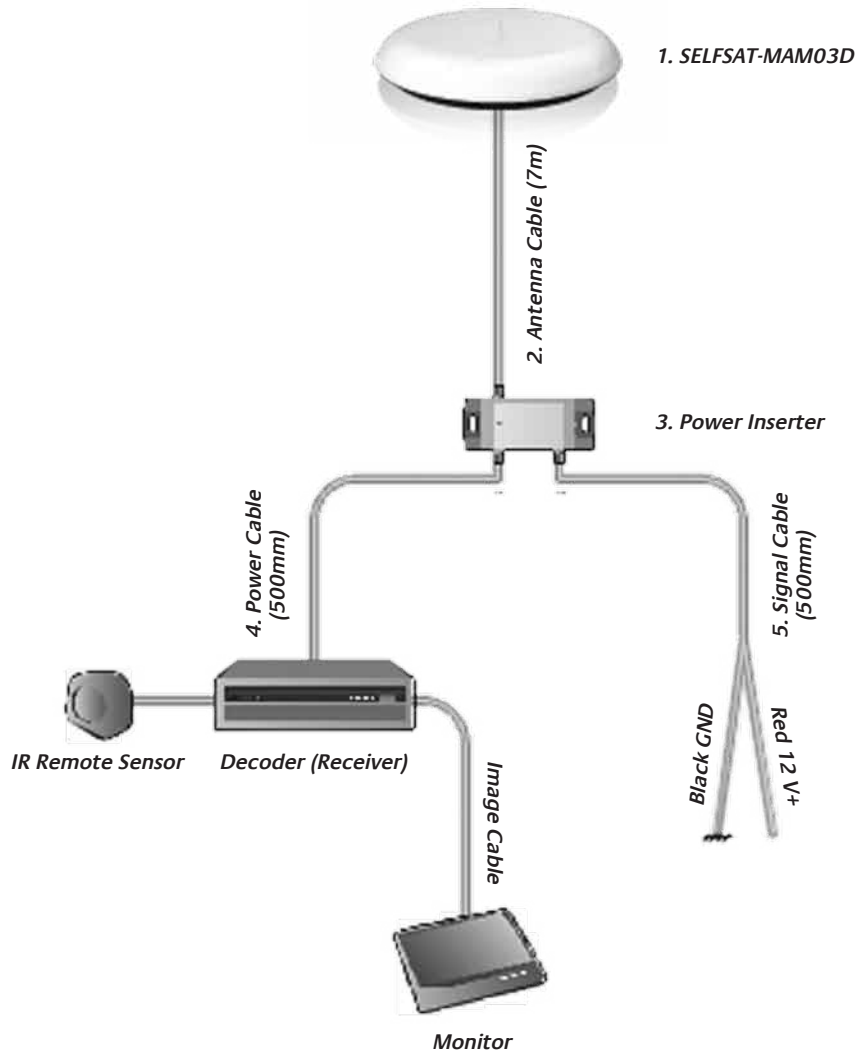


Note:

Please fill out the serial number marked on the product for warranty purposes and keep it along with the warranty record from the place of purchase. There may be a limitation in warranty if the record is not kept. Since the antenna accessories are consumable products, they may need to be replaced periodically.

4. Installation

Step 1. Installation Diagram



Step 2. Mounting And Installing The Satellite Antenna

<p>Satellite antenna mounting and installation</p>	<ul style="list-style-type: none"> • Mount the satellite antenna on the flat part of the top of the vehicle. • If the top side of the vehicle is projected or inclined, use the supplementary tools not included like fastening bracket to hold it tightly and horizontally. • Connect one side of the coaxial cable to the outside terminal of the satellite antenna and connect the other side to the antenna input terminal of the on-vehicle receiver.
<p>Installation checking</p>	<ul style="list-style-type: none"> • If the satellite antenna, on-vehicle receiver or monitor is not turned on after the power supply, check the above and then check the fuse box inside the vehicle.

Note: Cautions while installing the satellite antenna

- Please turn off the power before fixing or dismantling the satellite antenna.
- Make sure the satellite antenna is leveled horizontally before fastening it.
- Receiver must support the minimum 500mA of output current.

5. Storage and Maintenance



Use DC 12V/24V power on the vehicle.



Do not disassemble or open the product. It can cause damage to the product.



Installation and cabling of the satellite antenna requires skilled technique and experience of a professional. For safety purposes, please have the work done by the retailer or a skilled professional.



Make sure that the antenna is tightly fastened to the vehicle after mounting or installation. Unsecured installation may cause accidents.



Using the device while the engine is turned off may cause the battery to be discharged. Please use the product only when the engine is turned on.



Do not use the antenna in case there is smoke or unusual odor coming from the antenna, it may cause fires.



Do not use the antenna during a lightning storm. Otherwise, it may cause electric shock.



Do not place the antenna near any heat. It may cause damage to the equipment and the main body of the antenna.



Do not drop the product or apply pressure to it. Impact to the antenna may cause malfunction or fire.



Always ensure the antenna is clean. Dust or dirt may hinder the reception of satellite signals.



If the product is not in use after vehicle is parked, dismantle it and place it in a secure place inside the vehicle.

6. Customer Notes

The following cases are examples of the temporary reception troubles. They are not defects, and the performance will be back to the normal when the situation is cleared.

- Passing under an overhead bridge or through a tunnel.
- Driving up or down a steep, inclined road. (exceeding the angle of elevation)
- Passing by a high rise building, tall tree or telephone pole in the same direction as the satellite.
- During times of heavy rain or snow.

The following cases are examples of reception problem or defects.

- Video image appears to be broken into units of blocks partially or wholly.
- Temporary interruption of audio signals.
- Interruption of the A/V screen and display of "Searching for Signal" or prolonged 40 second stopped screen.
- Prolonged signal interruption for more than 5 seconds even after passing by the obstacle. (The recovery time may be longer when passing through a tunnel.)

7. Checklist for Troubleshooting

Screen turning black

- Check if the monitor is turned on.
- Check if the receiver box is turned on.

Either the screen or sound being interrupted

- Move up or down the channels of the receiver.

"No Signal" message being displayed

- Check the connection of A/V cable.
- Check the input signal mode of the monitor.
- Check if the receiver is turned on.
- Check the installation place of the antenna. The antenna must be installed on the flat part of the vehicle.
- Check the antenna cable.
- The reception may be temporarily interrupted due to bad weather conditions.

Please contact our distributors for any other inquiries.